

CARPI
BUDRIONE
ITALY

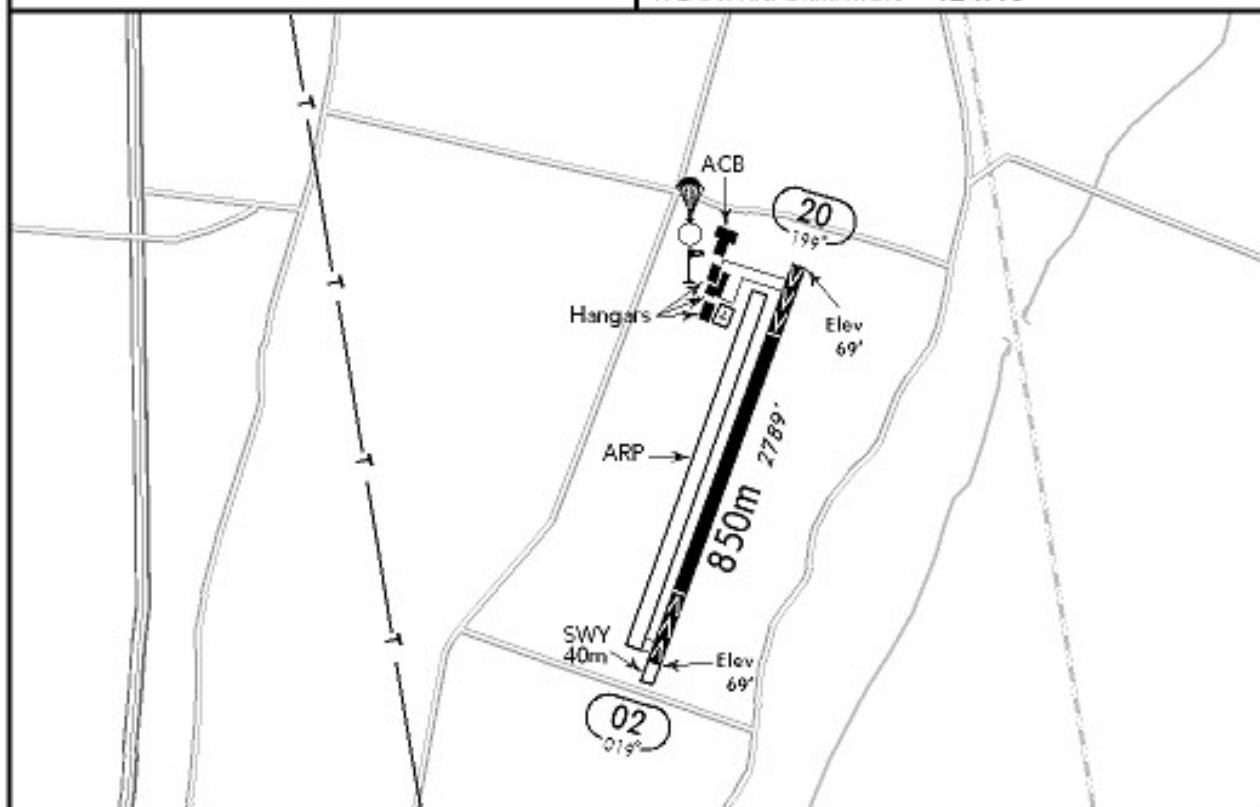
19-2 31 MAY 02

JEPPESEN



(FIS)

PADOVA INFORMATION 124.15



RWY No	Dimension (m) - Surface	TORA (m)	LDA (m)	Strength	Lights
02	850 x 28 Asphalt	850	704	LCN 45	—
20		850	708		

Note: See also GARDA 10-1V & BOLOGNA 10-1V.

On approach establish radio contact with CARPI RADIO 5 MIN prior reaching the ATZ.

Flights shall be carried out in accordance with the rules in force for Garda CTR.

Local flights shall be performed within 3 NM from the ARP and not above 3000' SFC.

Pay attention to glider flying and parachuting.

Avoid overflying built-up areas in the vicinity of the airfield.